

GRADE 2 | 3 | 4 | 5 | 6 | 7 | 8 | 9



Leaders in Reception Seating

Fabric Selections	Grade
Amuse	7
Focal	6
Free	6
Habit	4
Hue	5
Knack	5
Millennium	4
Syntax	3
Vario <small>DISCONTINUED</small>	6

MILLENNIUM

GRADE 4

CAL TB
133*
(see back cover)



SAFARI



STEEL



ELECTRIC



PERIDOT



VOYAGE



TANZANITE



ANCHOR



POOL



MOCHA



CERISE



ORCHID



SAPPHIRE



ONYX

SYNTAX

GRADE 3

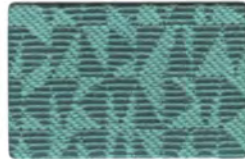
CAL TB
133*
(see back cover)



HUDSON



PLANT



TURQUOISE



CARMINE



PEWTER



COCOA



STEEL

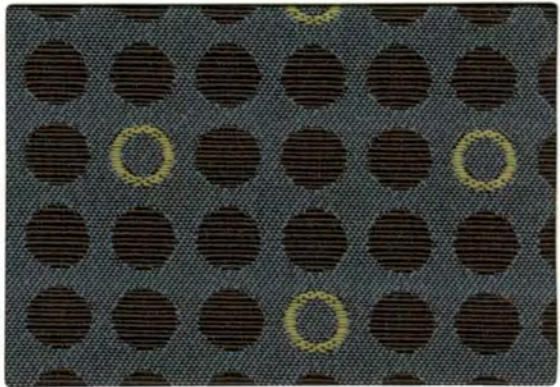
KNACK

GRADE 5

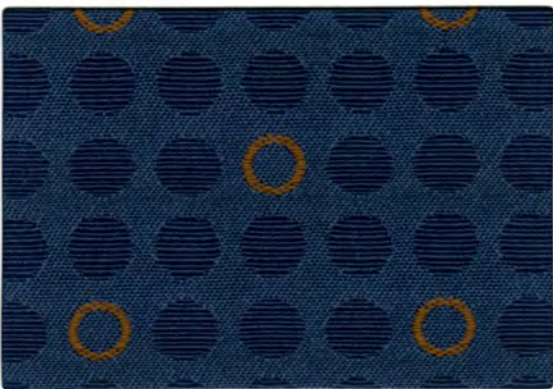
CAL TB
133*
(see back cover)



TEAK



FRESCO



BRISK



REED

HUE
GRADE 5

CAL TB
133*
(see back
cover)



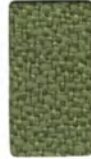
FROTHE



PAPRIKA



SEAPORT



FERN



INDIGO



ASPEN



CHAR



CHIPOTLE



LATTE



COCOA



CURRENT



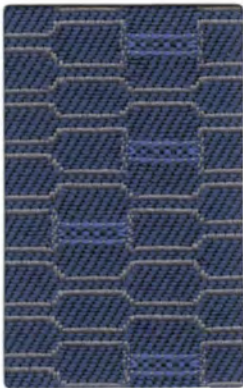
GRAPE



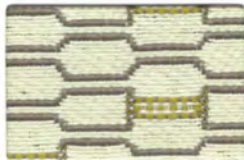
BLACK

HABIT
GRADE 4

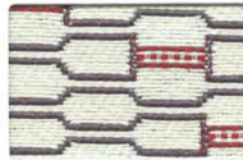
CAL TB
133*
(see back
cover)



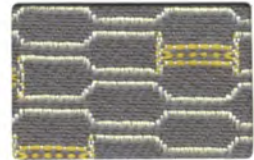
BLUEPRINT



ASPEN



SALT



DUNE



KINDLE



PIER



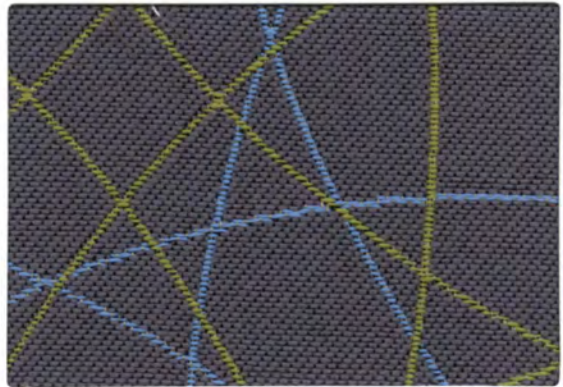
TAILOR

FREE
GRADE 6

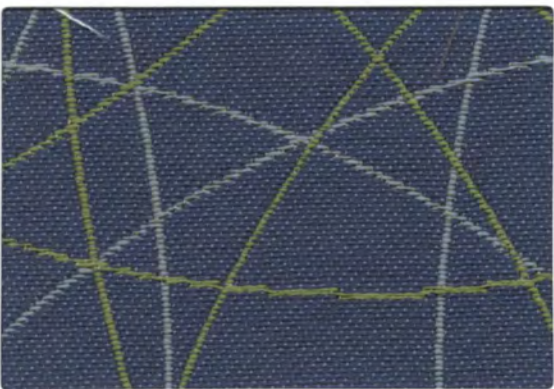
CAL TB
133*
(see back
cover)



PEARL



EVENING



OASIS



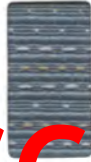
ORBIT

VARIO
GRADE 6

CAL TB
133*
(see back
cover)



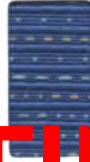
LINEN



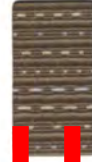
SCARLET



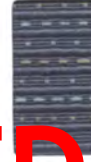
CRANBERRY



AUBERGINE



MACCHIATTO



BLAZER

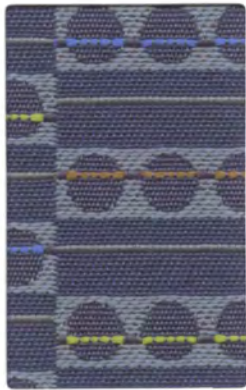


NIGHTLIFE

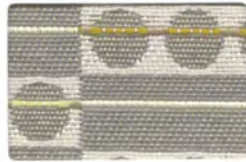
DISCONTINUED

FOCAL
GRADE 6

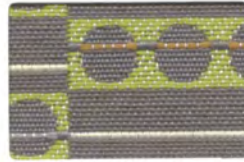
CAL TB
133*
(see back
cover)



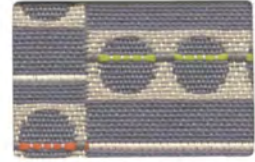
HUDSON



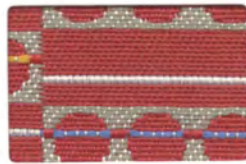
LINEN



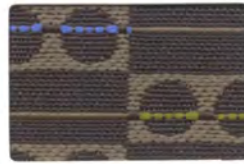
CITRON



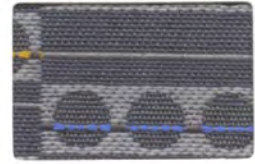
TERRACE



ALERT



CHOCOLATE



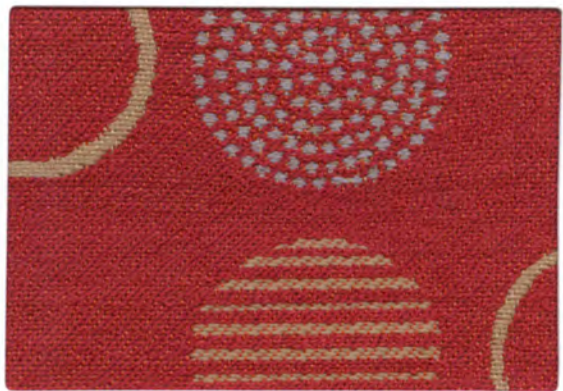
METRO

AMUSE
GRADE 7

CAL TB
133*
(see back
cover)



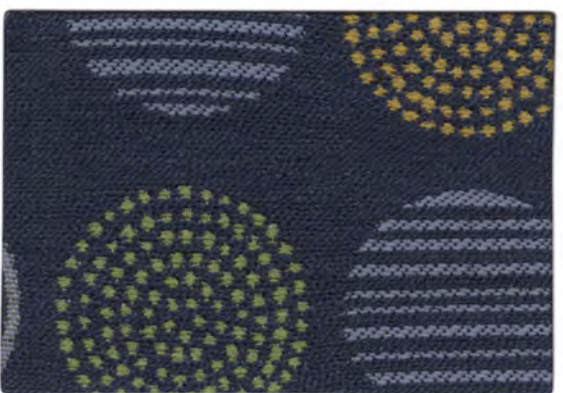
QUARTZ



POPPY



MOCHA



ADMIRAL

**Focal features multiple colors within the pattern. Please visit themomgroup.com to view larger samples.
Amuse features multiple colors within the pattern. Please visit themomgroup.com to view larger samples.**

Fabric Selections

Pattern	Fiber Content & Backing	Finish	Approx. Repeats	Abrasion (D.R.)	Lightfastness	Flammability*	Cleaning Code
AMUSE	61% Post Consumer Recycled Polyester, 39% Polyester Acrylic Backing	Soil & Stain Resistant	6-1/8" L, 7-1/2" W	50,000	40 Hrs. Class 4	CAL TB 117 2013 NFPA 260 Class 1 UFAC Class 1	WS
FOCAL	57% Post Consumer Recycled Polyester, 43% Polyester Acrylic Backing	Soil & Stain Resistant	4-1/2" L, 2-3/8" W	60,000	40 Hrs. Class 4.5	CAL TB 117 2013 NFPA 260 Class 1 UFAC Class 1	WS
FREE	100% Post Consumer Recycled Polyester Acrylic Backing	Soil & Stain Resistant	5-3/8" L, 5" W	100,000	40 Hrs. Class 4	CAL TB 117 2013 NFPA 260 Class 1 UFAC Class 1	WS
HABIT	100% Post Consumer Recycled Polyester Acrylic Backing	Soil & Stain Resistant	1-5/8" L, 3" W	50,000	40 Hrs. Class 4.5	CAL TB 117 2013 NFPA 260 Class 1 UFAC Class 1	WS
HUE	100% Post Industrial Recycled Polyester Latex Backing	Teflon®	(none)	1,000,000	60 Hrs. Class 4.5	CAL TB 117 2013 NFPA 260 Class 1 ASTM E84	WS
KNACK	100% Polyester Acrylic Backing	Soil & Stain Resistant	1-5/8" L, 1-3/4" W	100,000	40 Hrs. Class 5	CAL TB 117 2013 NFPA 260 Class 1 UFAC Class 1	WS
MILLENNIUM	85% Post Consumer Recycled Polyester, 15% Polyester Acrylic Backing	Soil & Stain Resistant	1/8" L, 1/8" W	200,000	40 Hrs. Class 4	CAL TB 117 2013 NFPA 260 Class 1 UFAC Class 1 ASTM E84	WS
SYNTAX	50% Post Consumer Recycled Polyester, 50% Polyester Acrylic Backing	Soil & Stain Resistant	6-1/4" L, 7-1/8" W	115,000	40 Hrs. Class 4.5	CAL TB 117 2013 NFPA 260 Class 1 UFAC Class 1	WS
VARIO DISCONTINUED	100% Polyester Acrylic Backing	InCase™ Fabric Protection	(none)	141,000	40 Hrs. Class 4.5	CAL TB 117 2013 NFPA 260 Class 1 UFAC Class 1	W

Cleaning Code Definitions

WS: Clean with water-based cleaning agents, foam or pure, water-free solvents (Energine, Carbona, Renuzit or other similar products). Vacuuming or light brushing is recommended to prevent dust and soil build up.

W: Water-based cleaning agents or foam may be used.

*This term and any corresponding data refer to typical performance in the tests indicated and should not be construed to imply the behavior of this or any other material under actual fire conditions.

CAL TB 133*

This term and any corresponding data refer to typical performance in the tests indicated and should not be construed to imply the behavior of this or any other material under actual fire conditions. These patterns can be approved for California Technical Bulletin 133 use when used in conjunction with other suitable components. **Additional charges will apply.** Please contact Lesro customer service for additional information.



Leaders in Reception Seating

For memo samples, please contact:

MOMENTUM
T E X T I L E S

Phone: 800.366.6839
themomgroup.com

Lesro Industries, Inc. | Bloomfield, CT 06002
800.275.7545 | www.lesro.com