



Seating the Way You Want It
Since 1973

WOVEN PATTERNS	GRADE	VINYL PATTERNS	GRADE
Adler	3	Aerial	3
Archetype	2	Chambray	4
Boothby	2	Kaleidoscope	5
Connelly	2	Linette	3
Constance	4	Milano Stitch	3
Emerge	2	Modena	2
Huron	4	Patriot Plus	3
Marchmount	3	Plot Line	3
Open House	2	Silvertex	4
Reframe	3	Whisper	3
Rise	3		
		POLYURETHANE PATTERNS	GRADE
		Castillo	3
		Dillon	2

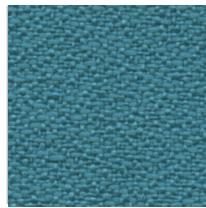
OPEN HOUSE | 100% RECYCLED | GRADE 2



BLACK



NAVY



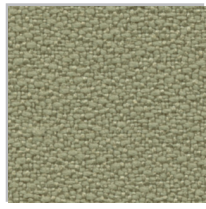
WATERFALL



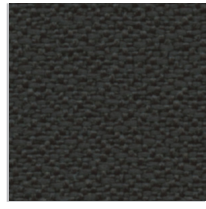
GOOSE



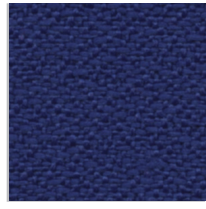
COFFEE BEAN



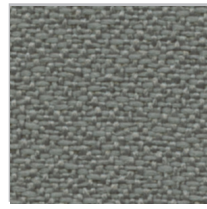
EUCALYPTUS



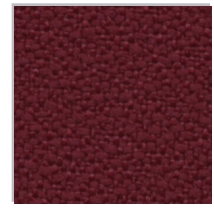
GRAPHITE



COBALT

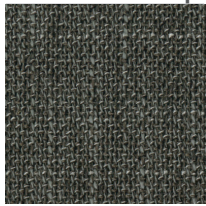


ASTEROID

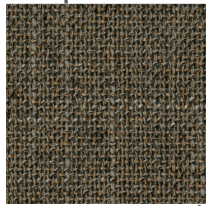


WINE

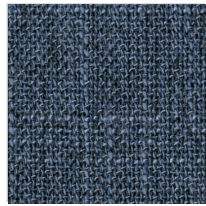
ARCHETYPE | i-CLEAN | GRADE 2



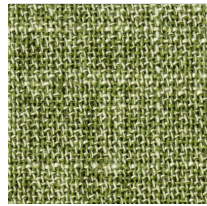
SMOKE



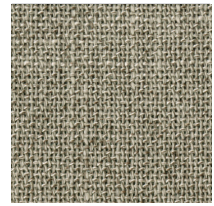
CAFÉ



ADMIRAL

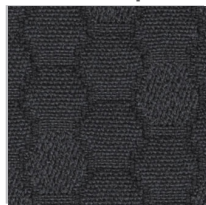


HERBAL



SILT

EMERGE | CLEAN IMPACT | 100% RECYCLED BIODEGRADABLE | GRADE 2



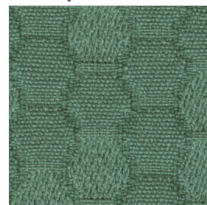
EVENING



SQUID INK



SMOKE

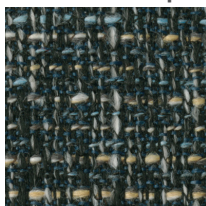


ALOE

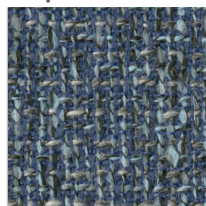


PARCHMENT

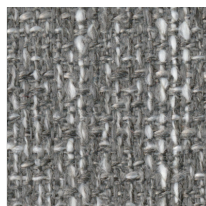
CONNELLY | i-CLEAN | GRADE 2



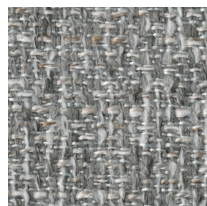
CROW



BLUE JAY



OWL

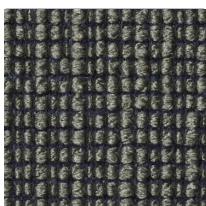


DOVE

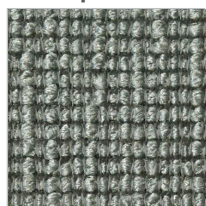


WREN

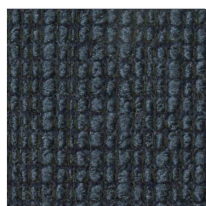
MARCHMOUNT | i-Clean | GRADE 3



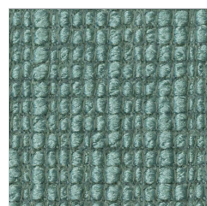
PEWTER



ECLIPSE



NAVY

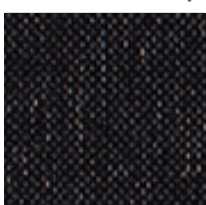


LAKESHORE



SANDBAR

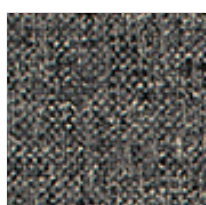
CONSTANCE | SUPREEN | GRADE 4



THUNDER



STOIC



PEWTER

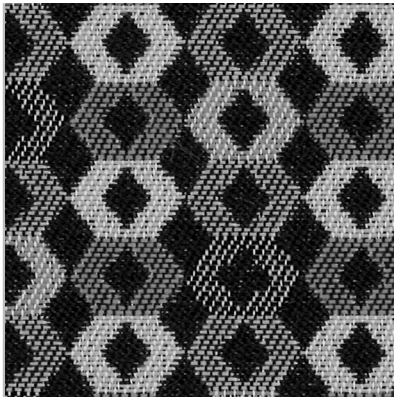


WATERFALL



FLAGSTONE

RISE | CLEAN IMPACT | 100% RECYCLED BIODEGRADABLE | GRADE 3



ECHO



NIGHT SKY



SHADOW



RAIN SONG



FROST



FOG

ADLER | TEFLON | GRADE 3



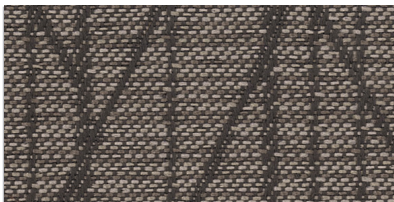
NOCTURNAL



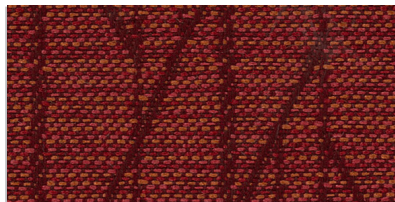
MIDNIGHT SKY



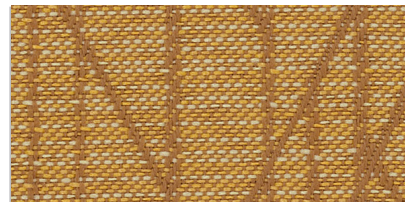
PEPPERCORN



GREY FLANNEL



CALIENTE

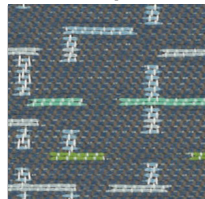


GOLDEN

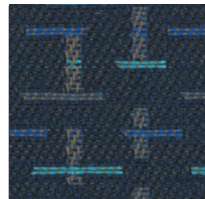
REFRAME | CLEAN IMPACT | 100% RECYCLED BIODEGRADABLE | GRADE 3



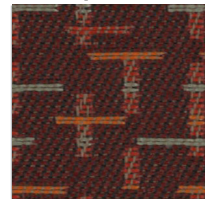
BLACK SESAME



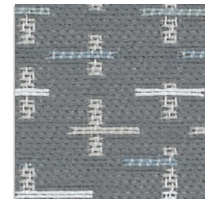
SERENE



BLUEBERRY



NEBBIOLO

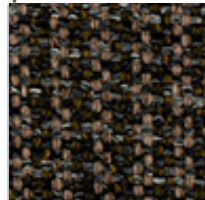


VAPOR

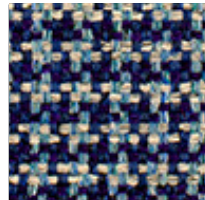
HURON | SUPREEN | GRADE 4



ASH



ROOTBEER



SCOONER



GRANITE



CUMULUS

DILLON | POLYURETHANE | GRADE 2



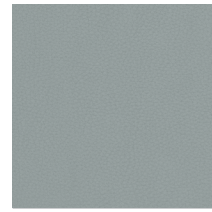
BLACK



OCEAN



WILLIAMSBURG



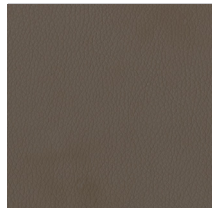
LUCID



BUFF



GRAPHITE



JAVA



SAGE

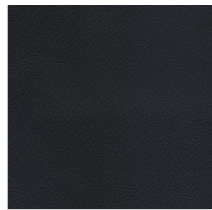


APPLE GREEN

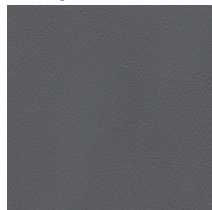


CORDOVAN

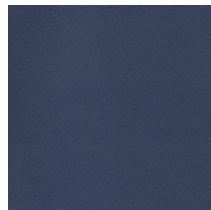
PATRIOT PLUS | VINYL | GRADE 3



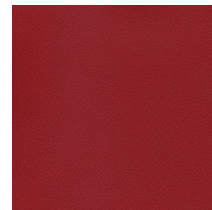
BLACK



CHARCOAL



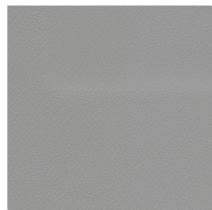
IMPERIAL BLUE



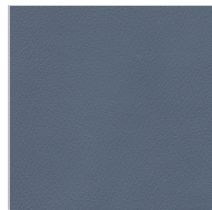
BORDEAUX



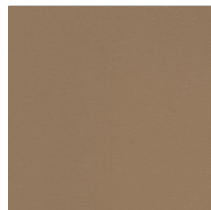
CONCRETE



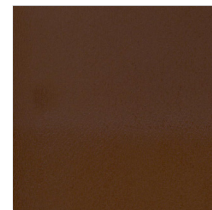
DOVE



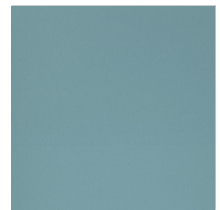
BLUE RIDGE



TAUPE

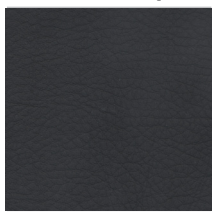


MOCHA



SEA

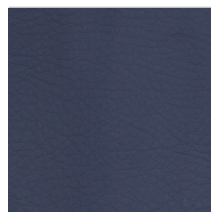
WHISPER | VINYL | GRADE 3



BLACK



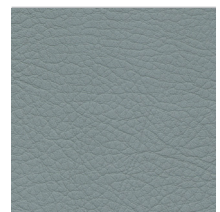
CHARCOAL



NAVY

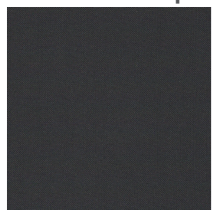


CAPPUCCINO



PATINA

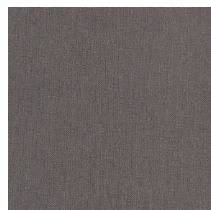
SILVERTEX | VINYL | GRADE 4



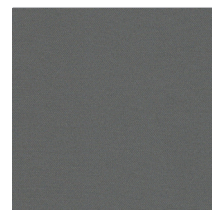
CARBON



SAPPHIRE



METEOR

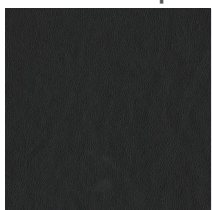


STERLING



BRONZE

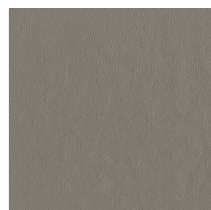
CASTILLO | POLYURETHANE | GRADE 3



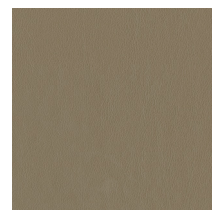
BLACK



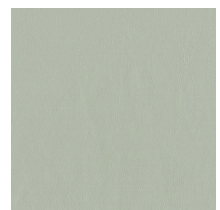
BATIK



METAL

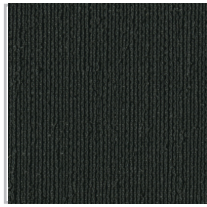


QUARRY

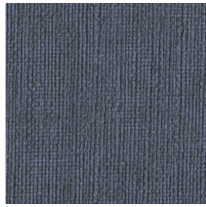


BREEZY

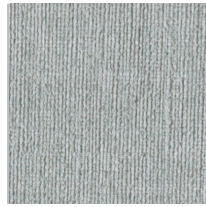
LINETTE | VINYL | GRADE 3



BLACK



DENIM



ASH



STONE



PLATINUM

MODENA | VINYL | GRADE 2



BLACK



INK



TITAN

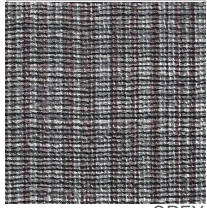


GRAPHITE



FARRO

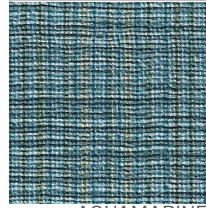
CHAMBRAY | VINYL | GRADE 4



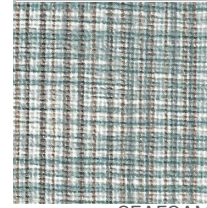
GREY



LIGHT NAVY



AQUAMARINE

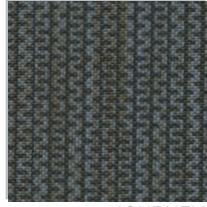


SEAFOAM

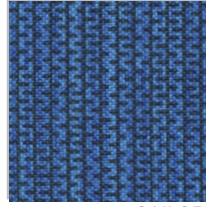


LIMESTONE

MILANO STITCH | VINYL | GRADE 3



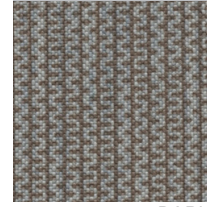
JOURNEY



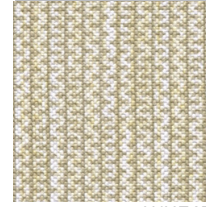
SAILOR



STONE



BARK



WHEAT

KALEIDOSCOPE | VINYL | GRADE 5



ICEBERG

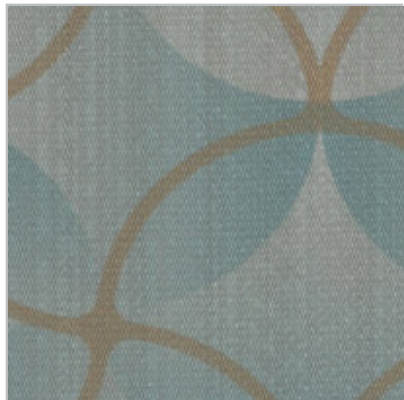


SLIPPER



ECRU

AERIAL | VINYL | GRADE 3



FOAM



SMOKEHOUSE

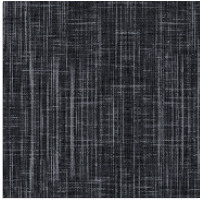


COAL

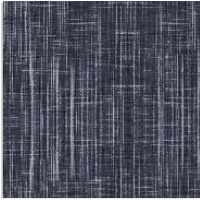
Latest Additions

Vinyl & Polyurethane

PLOT LINE | i-Clean | GRADE 3



CAULDRON



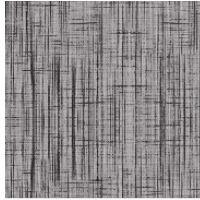
NAVY



NEUTRAL



ICICLE



STEEL

DILLON | POLYURETHANE | GRADE 2



SAFARI

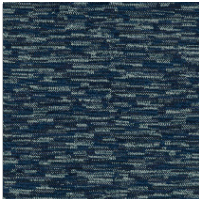


THUNDER

SEE MORE DILLON ON PAGE 4

Woven

BOOTHBY | GRADE 2



BLAZER



CASTLEROCK

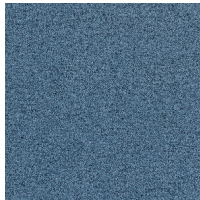


GLACIER

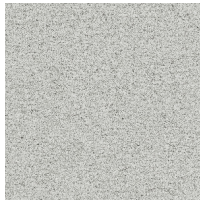


MARBLE

OPEN HOUSE | 100% RECYCLED | GRADE 2



QUARRY BLUE



SHADOW

SEE MORE OPEN HOUSE ON PAGE 2

Technical Information

Express Selections - Vinyls & Polyurethanes

Pattern	Fiber Content & Backing	Finish	Approx. Repeats	Abrasion (D.R.)	Flammability*	Special Properties
AERIAL	100% Phthalate Free Vinyl Surface 100% Polyester Backing	PreFixx	18" V x 18" H	1,200,000	CAL TB 117-2013 NFPA 260 UFAC Class I	Phthalate Free, No Heavy Metals, Stain Resistant, Chemical Resistant, No Antimicrobials, Denim Stain Cleanable, No Flame Retardants
CASTILLO	100% Polyurethane 87% Polyester, 13% Cotton Backing	Antimicrobial i-clean™	(none)	200,000	CAL TB 117-2013 NFPA 260 UFAC Class I	PVC Free
CHAMBRAY NEO	100% Vinyl Urethane Topcoat, Hi-Loft ² ™ Backing	PBG+	(none)	100,000	CAL TB 117-2013 NFPA 260 UFAC Class I	Formaldehyde Free, Water Resistant, No Heavy Metals, Stain Resistant, No Antimicrobials, No Flame Retardants
DILLON	100% Polyurethane 70% Polyester, 30% Cotton Backing	Antimicrobial	(none)	200,000	CAL TB 117-2013 NFPA 260 UFAC Class I	PVC Free
KALEIDOSCOPE NEO	100% Vinyl, Hi-Loft ² ™ Backing	PBG+	18" V x 18" H	100,000	CAL TB 117-2013 NFPA 260 UFAC Class I	Formaldehyde Free, Water Resistant, No Heavy Metals, Stain Resistant, No Antimicrobials, No Flame Retardants
LINETTE	100% Vinyl 100% Polyester Backing	Antimicrobial i-clean™	(none)	100,000	CAL TB 117-2013 NFPA 260 UFAC Class I	
MILANO STITCH ECOSENSE	100% Vinyl Hi-Loft ² ™ Backing	Permablok	9" V x 10.1" H	100,000	CAL TB 117-2013 NFPA 260 UFAC Class I	Formaldehyde Free, Phthalate Free, Water Resistant, No Heavy Metals, Stain Resistant, No Antimicrobials, No Flame Retardants
MODENA ECOSENSE	100% Vinyl Hi-Loft ² ™ Backing	Permablok® Plus	(none)	100,000	CAL TB 117-2013 NFPA 260 UFAC Class I	Formaldehyde Free, Phthalate Free, Denim Dye Cleanable, Water Resistant, No Heavy Metals, Stain Resistant, No Antimicrobials, No Flame Retardants
PATRIOT PLUS NEO	100% Vinyl Urethane Topcoat, 65% Polyester, 35% Cotton Backing	Permablok®	(none)	100,000	CAL TB 117-2013 NFPA 260 UFAC Class I	Formaldehyde Free, Water Resistant, No Heavy Metals, Stain Resistant, No Antimicrobials, No Flame Retardants
PLOT LINE	100% Vinyl 70% Polyester, 30% Cotton Backing	Antimicrobial i-clean™	(none)	200,000	CAL TB 117-2013 NFPA 260 UFAC Class I	Antimicrobial, Moisture & Stain Repellent, No Flame Retardants, Bleach Cleanable
SILVERTEX NEO	100% Vinyl Hi-Loft ² ™ Backing	Permablok®	(none)	100,000	CAL TB 117-2013 NFPA 260 UFAC Class I	Formaldehyde Free, Water Resistant, No Heavy Metals, Stain Resistant, Bacterial Resistant, No Flame Retardants
WHISPER NEO PLUS	100% Vinyl Hi-Loft ² ™ Backing	Permablok® Plus	(none)	100,000	CAL TB 117-2013 NFPA 260 UFAC Class I	Formaldehyde Free, Denim Dye Cleanable, Water Resistant, No Heavy Metals, Stain Resistant, No Antimicrobials, No Flame Retardants

* This term and any corresponding data refer to typical performance in the tests indicated and should not be construed to imply the behavior of this or any other material under actual fire conditions.

Care and Cleaning Instructions:

For easy cleaning of recent soiling, promptly wash with a mild soap solution. Cleaning frequency depends on use. Please clean and maintain your furniture regularly. Clean all stains as quickly as possible and use the following cleaning procedure for the best results.

- Step 1:** Remove any excess spills with a damp cloth. Clean with a mild liquid soap and water mixture. Rinse with clear water and dry.
- Step 2:** Use a straight application of concentrated cleaners such as Formula 409® or Fantastik®. Rinse with clear water. Wipe with a clean cloth.
- Step 3:** For more difficult stains and disinfecting, use a 10% mixture of bleach with water. Rinse with clear water and dry. Never use bleach in full strength to clean material.

Recommendation: Please be sure to use a soft brush or cloth saturated with cleaning material. Always test cleaning methods on an inconspicuous area of the furniture.

Caution: This information is not a guarantee and does not relieve the user from the responsibility of the proper and safe use of these materials and all cleaning agents.

For further cleaning and care instructions, please visit our website.

California Prop 65 and other regulatory compliance information can be found on our website for all Lesro products and upholsteries.



Seating the Way You Want It
Since 1973

Technical Information

Express Selections - Woven

Pattern	Fiber Content & Backing	Finish	Approx. Repeats	Abrasion (D.R.)	Lightfastness	Flammability*	Cleaning Code
ADLER	100% Polyester Acrylic Backing	Teflon®	5.75" V, 4.625" H	50,000	60 Hrs. Grade 4.5	CAL TB 117-2013 NFPA 260	WS
ARCHETYPE	79% Polyester, 21% Rayon 100% Polyester Non-Woven Scrim Backing	i-clean™	(none)	75,000	40 Hrs. Grade 4	CAL TB 117-2013 NFPA 260 Class I UFAC Class I	WS
BOOTHBY	100% Polyester	(none)	6" V, 4.75" H	100,000	40 Hrs. Grade 4	CAL TB 117-2013 NFPA 260 Class I UFAC Class I	W
CONNELLY	100% Polyester Synthetic Latex Blend Backing	i-clean™	(none)	95,000	40 Hrs. Grade 4	CAL TB 117-2013 NFPA 260 Class I UFAC Class I	WS
CONSTANCE	88% Polyester, 10% Polyurethane, 2% Silicone 100% Polyurethane Backing	SUPREEN	(none)	100,000+	40 Hrs. Grade 5	CAL TB 117-2013 NFPA 260 Class I UFAC Class I	WS, BC
EMERGE	81% Post-Consumer Recycled Biodegradable Polyester**, 19% Pre-Consumer Recycled Biodegradable Polyester**	(none)	(none)	100,000	40 Hrs. Grade 4.5	CAL TB 117-2013 NFPA 260 Class I	WS, BC
HURON	91% Polyester, 7% Polyurethane, 2% Silicone	SUPREEN	(none)	100,000+	40 Hrs. Grade 5	CAL TB 117-2013 NFPA 260 Class I UFAC Class I	WS, BC
MARCHMOUNT	100% Polyester Synthetic Latex Blend Backing	i-clean™	(none)	100,000	40 Hrs. Grade 4	CAL TB 117-2013 NFPA 260 Class I UFAC Class I	WS
OPEN HOUSE	35% Post-Consumer Recycled Polyester, 65% Pre-Consumer Recycled Polyester	(none)	(none)	250,000	40 Hrs. Grade 4	CAL TB 117-2013 NFPA 260 Class I	WS
REFRAME	100% Post-Consumer Recycled Biodegradable Polyester**	CO Stain & Water Repellent	5.88" V, 7.38" H	75,000	40 Hrs. Grade 4	CAL TB 117-2013 NFPA 260 Class I	WS, BC
RISE	100% Post-Consumer Recycled Biodegradable Polyester**	CO Stain & Water Repellent	1.63" V, 2.35" H	75,000	40 Hrs. Grade 4.5	CAL TB 117-2013 NFPA 260 Class I	WS, BC

* This term and any corresponding data refer to typical performance in the tests indicated and should not be construed to imply the behavior of this or any other material under actual fire conditions.

** Rate and extent of biodegradation into elements found in nature is 91% after 1,278 days under ASTM D5511 (Anaerobic Biodegradation of Plastic Materials Under High Solids Anaerobic Digestion Conditions). The test was done with the same component (PET) polyester and biocatalyst additive. No evidence of further degradation.

Cleaning Code Definitions

W: Water-based cleaning agents or foam may be used.

WS: Clean with water-based cleaning agents, foam or pure, water-free solvents. So not saturate with liquid. Vacuuming or light brushing is recommended to prevent dust and soil build up.

BC: Bleach Cleanable. Clean with a 10% bleach-to-water solution. Rinse well after cleaning.

For further cleaning and care instructions, please visit our website.

California Prop 65 and other regulatory compliance information can be found on our website for all Lesro products and upholstery.



Seating the Way You Want It
Since 1973

Express Upholstery Selections are stocked at Lesro and available for orders requiring fast delivery upon request. Products with mixed Express Upholstery Selections are also available for fast delivery.

Turn to Lesro's Express Upholstery Selections for all your time-critical orders.

You can now configure all of Lesro's most popular products with the fabrics and finishes of your choice using the LesroCreate design tool.

To get started simply scan the QR code below:



Seating the Way You Want It
Since 1973



Express Selections™



American Built™



Pain-Free Pledge™

Lesro Industries, Inc. | Bloomfield, CT 06002
800.275.7545 | www.lesro.com