



Seating the Way You Want It™
Since 1973

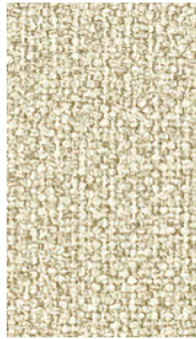
Pattern Selections

Grade

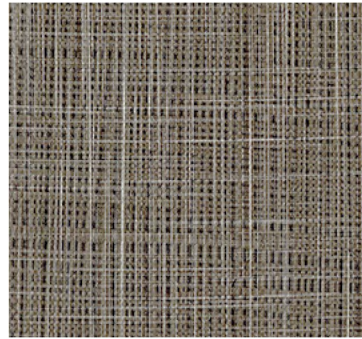
Book Club	3
Golly	3
Linette	3
Plot Line	3



Linette Cola | GR 3



Book Club Wheat | GR 3



Plot Line Shale | GR 3



Golly Porcini | GR 3



Book Club Cashmere | GR 3



Plot Line Neutral | GR 3



Linette Glaze | GR 3



Golly Stucco | GR 3



Linette Moss | GR 3



Book Club Moss | GR 3



Plot Line Grass | GR 3



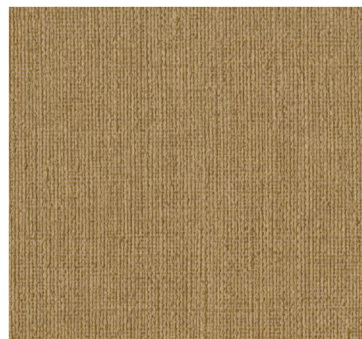
Golly Rosemary | GR 3



Plot Line Wheat | GR 3



Golly Armagnac | GR 3



Linette Toffee | GR 3



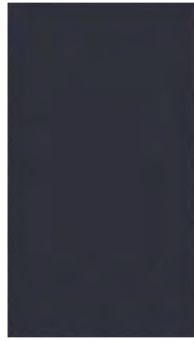
Book Club Sun | GR 3



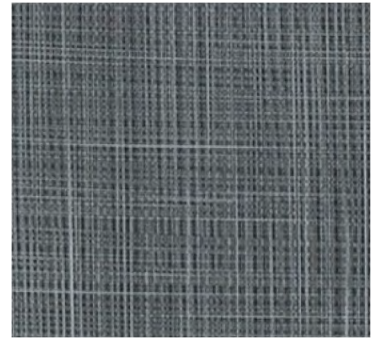
Linette Denim | GR 3



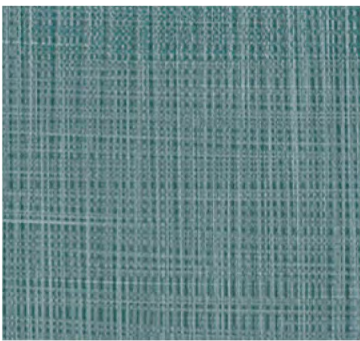
Book Club Blue Jay | GR 3



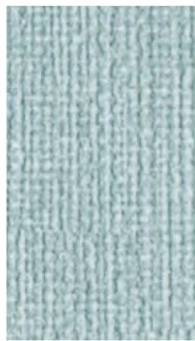
Golly Nautical | GR 3



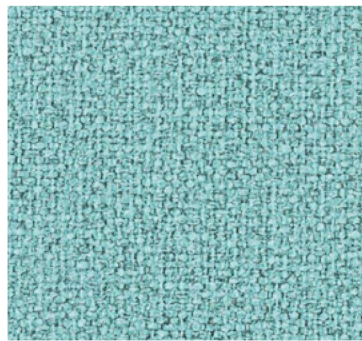
Plot Line Navy | GR 3



Plot Line Kingman | GR 3



Linette Waterscape | GR 3



Book Club Bahama | GR 3



Golly Turquoise | GR 3



Linette Steel | GR 3



Plot Line Steel | GR 3



Book Club Granite | GR 3



Golly Neutral | GR 3



Golly Onyx | GR 3



Book Club Ebony | GR 3



Plot Line Cauldron | GR 3



Linette Black | GR 3

Technical Information

Pattern	Fiber Content & Backing	Finish	Approx. Repeats	Abrasion (D.R.)	Flammability*	Special Properties
BOOK CLUB	100% Vinyl 70% Polyester, 30% Cotton Backing	Antimicrobial i-clean™	(none)	145,000	CAL TB 117-2013 NFPA 260 Class 1 UFAC Class 1	Antimicrobial, Moisture & Stain Repellent, No Flame Retardants, Bleach Cleanable
GOLLY	53% Polyester, 42% Polyurethane 5% Silicone, Polyester Backing		(none)	100,000+	CAL TB 117-2013 UFAC Class 1	Moisture & Stain Repellent, No Flame Retardants, Bleach Cleanable
LINETTE	100% Vinyl 100% Polyester Backing	Antimicrobial i-clean™	(none)	100,000	CAL TB 117-2013 NFPA 260 Class 1 UFAC Class 1	Antimicrobial, Moisture & Stain Repellent, No Flame Retardants, Bleach Cleanable
PLOT LINE	100% Vinyl 70% Polyester, 30% Cotton Backing	Antimicrobial i-clean™	(none)	200,000	CAL TB 117-2013 NFPA 260 Class 1 UFAC Class 1	Antimicrobial, Moisture & Stain Repellent, No Flame Retardants, Bleach Cleanable

*This term and any corresponding data refer to typical performance in the tests indicated and should not be construed to imply the behavior of this or any other material under actual fire conditions.

Cleaning Instructions:

Recommended Cleaning Solution: Mixture of Tide® or Oxiclean® and warm water (1 teaspoon of soap for every 16 ounces water).

For general spills, such as water, coffee, wine, etc.:

Gently blot with dry cloth to remove spill, if the spill has dried, dampen the cloth with water and gently work the spill in a circular motion. Avoid rubbing the infected area aggressively. Once the spill has been completely removed, it is important to wipe the surface with a dry cloth to remove any remaining moisture.

* If the spill has evolved into a stain, a mixture of a mild soap, and water (as recommended above) should be used to remove the stain. Dampen a cloth with the mixture and gently work the stain in a circular motion. Avoid rubbing the infected area aggressively, and be sure not to oversaturate the fabric. After the stain is removed, dampen a cloth with water only and wipe away any excess soap left behind, and wipe the surface with a dry cloth to remove any remaining moisture.

For tougher, non-liquid spills, such as mustard, mayonnaise, sunscreen, etc.:

Remove the excess contaminant from the surface of the fabric before cleaning. If the spill has dried up on the fabric, a soft brush or butter knife should be used to remove the dried contaminants before any liquid cleaning treatment is performed. After the contaminants have been removed, proceed with the cleaning method above.

For Healthcare stains, such as blood, urine, disinfectant, etc.:

A water to bleach solution of 5:1 is recommended. It is important to rinse the cleaned area with water, and dry after applying the bleach solution.

Solvents:

Please consult Culp Contract before using unapproved cleaners not listed below.

The use of solvents may be necessary when all other cleaning methods have been exhausted, and the stain remains. Spray the solvent directly onto the stain and allow it to sit for 2-3 minutes, avoid oversaturating the fabric. Gently work the stain in a circular motion, and be sure to avoid rubbing the infected area aggressively. After cleaning, make sure to wipe the fabric down with a damp cloth to remove any excess cleaning solution, and then wipe down with a dry cloth to remove any remaining moisture.

Approved Cleaners:

- Shockwave
- Recon
- Benefact
- Microban
- Greased Lightning-Degreaser
- Lysol Wipes
- Diluted bleach solution (5:1 water to bleach)
- Dispatch disinfectant towels with bleach
- PDI Sani-Hands wipes
- PDI Super Sani-Cloth germicidal disposable wipes
- Diversey Morning Mist Neutral Disinfectant Cleaner
- Virex 256
- Oxycide
- Formula 409

For memo samples, please contact:



Lesro Industries, Inc.
Bloomfield, CT 06002
800.275.7545
www.lesro.com



i-clean™ upholsteries are high performance upholsteries engineered for extreme comfort, durability and ease of maintenance. Utilizing Nano-based technology, spills bead up and sit on the upholstery until they are gently blotted with a cloth for clean-up. With their moisture repellency and stain resistance, i-clean™ upholsteries make it easy to keep your furniture looking and feeling brand new.

Key Features of i-clean™:

- High-Performance Moisture and Stain Repellent
 - AATCC TM22-2014, Water Repellency: Spray Test
 - AATCC TM 118-2013, Oil Repellency: Hydrocarbon Resistance Test
- Innovative technology that surrounds each fiber to repel spills before they become stains
- Easy To Clean - Spills sit on the surface of the upholstery
- Commercial Cleanability
- Anti-Abrasion Properties
- Does not contain hazardous chemicals
 - No added Formaldehyde
 - No flame retardants
 - No PFO's or PFOA's
 - Very low VOC's

Scan this code to watch a quick video on i-clean™:



Scan code below to learn more about all Lesro upholstery selections including Culp i-clean™ Selections:



Express Selections™



American Built™



Pain-Free Pledge™